

Economic Conditions in Low- and Moderate-Income Communities

Emporia Regional Economic Outlook Conference

Emporia, KS (October 26, 2018)

Kelly D. Edmiston
Senior Economist



Disclaimer

This presentation reflects the views of the speaker and not necessarily the views of the Federal Reserve Bank of Kansas City or the Federal Reserve System.



Some Facts About Lyon County

- Median Household Income
 - Lyon County, \$40,611
 - State of Kansas, \$53,571
 - Kansas City MSA, \$61,567 (Johnson Co., \$78,186)
 - Wichita MSA, \$50,853
- Poverty Rate
 - Lyon County, 20.9%
 - U.S., 12.3%
 - State of Kansas, 13.3%
 - Kansas City MSA (KS part), 9.9%
 - Wichita MSA, 14.2%



LMI Economic Conditions

- Accessing the Report
- General Assessment
- Labor Market
- Housing
- Health4



MAIN STREET VIEWS | *Policy insights from the Kansas City Fed*

Main Street Views > Tenth District LMI Economic Conditions

kcFED *LMI* ECONOMIC CONDITIONS

Tenth District LMI Economic Conditions

Topics: Indicators and Data



Kelly D. Edmiston, Senior Economist

SEPTEMBER 04, 2018 |

Despite a strong national economy, economic and financial challenges remain for low- and moderate-income communities.

I. Economic Update for LMI Communities

The first section of the LMI Economic Conditions Report is an assessment of economic conditions in low- and moderate-income (LMI) communities in the Tenth District, which encompasses Colorado, Kansas, the western third of Missouri, Nebraska, the northern half of New Mexico, Oklahoma and Wyoming. A person, household, or community is LMI if income is below 80 percent of area median income. For urban areas, area median income is metropolitan median income. For non-metro areas, area median income is state median income.

Section I-A examines general perceptions of economic conditions in LMI communities and the demand for services from community organizations. Section I-B focuses on labor market conditions and job availability. Sections 1-C and 1-D focus on affordable housing and access to credit, respectively. Section II focuses on a special topic: income and health in the LMI community.

Search Main Street Views: GO

About Main Street Views

Main Street Views highlights the diverse range of economic research and programs of the Kansas City Fed, including the annual Jackson Hole Economic Policy Symposium; analysis of macroeconomic, banking, and payments issues; and insight into the seven states and industries of the Tenth Federal Reserve District.

Topics

[Agriculture](#) | [Banking and Finance](#) | [Credit](#) | [Energy](#) | [Housing](#) | [Indicators and Data](#) | [Inflation](#) | [Interest Rates](#) | [International](#) | [Labor Market](#) | [Macroeconomics](#) | [Manufacturing](#) | [Monetary Policy and the Economy](#) | [Payments](#) | [Regional](#) | [Student Loans](#)

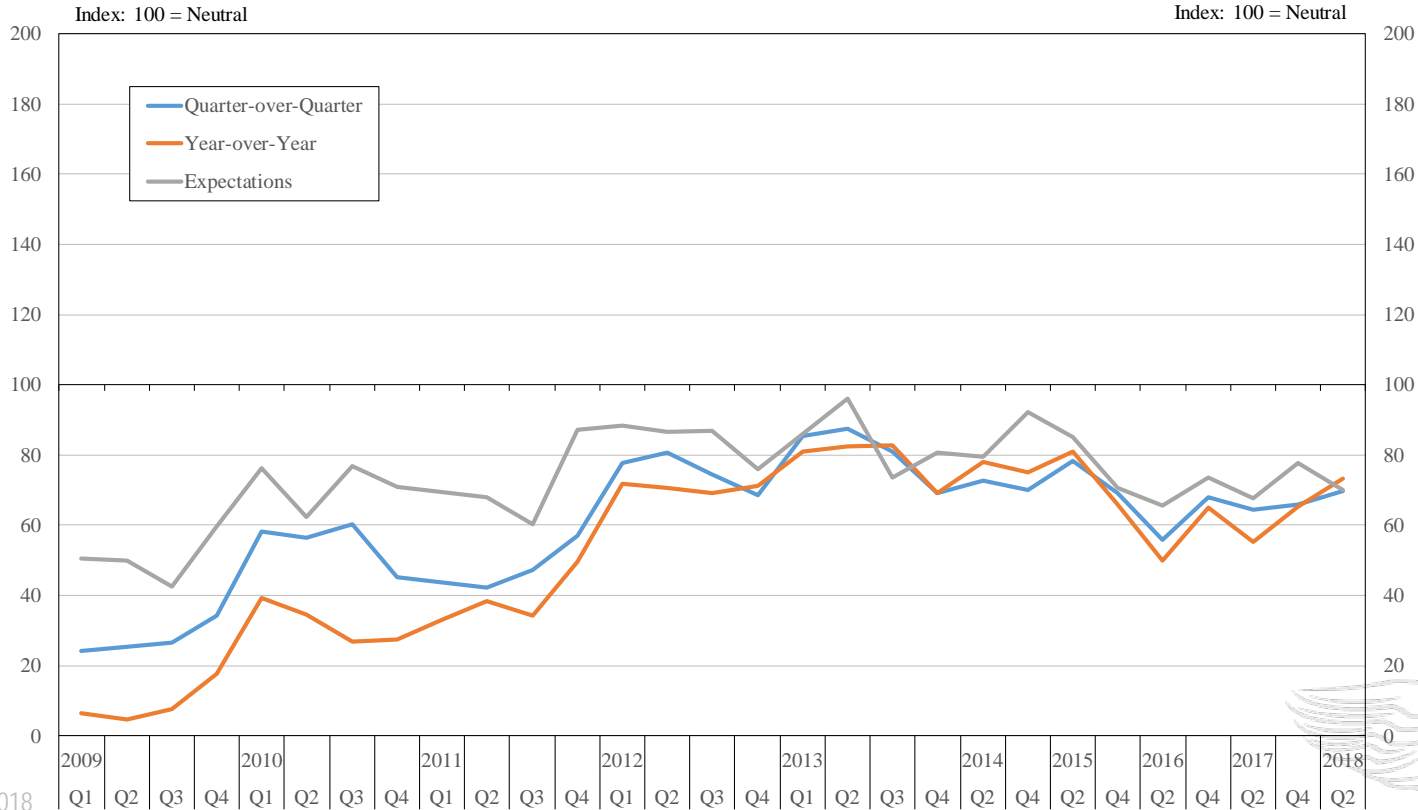
Our Experts

Our research staff conducts innovative research on monetary policy, the payments system, and regional and community issues. Our work is shared with policymakers, other researchers, and the public.

[Meet our research staff](#)

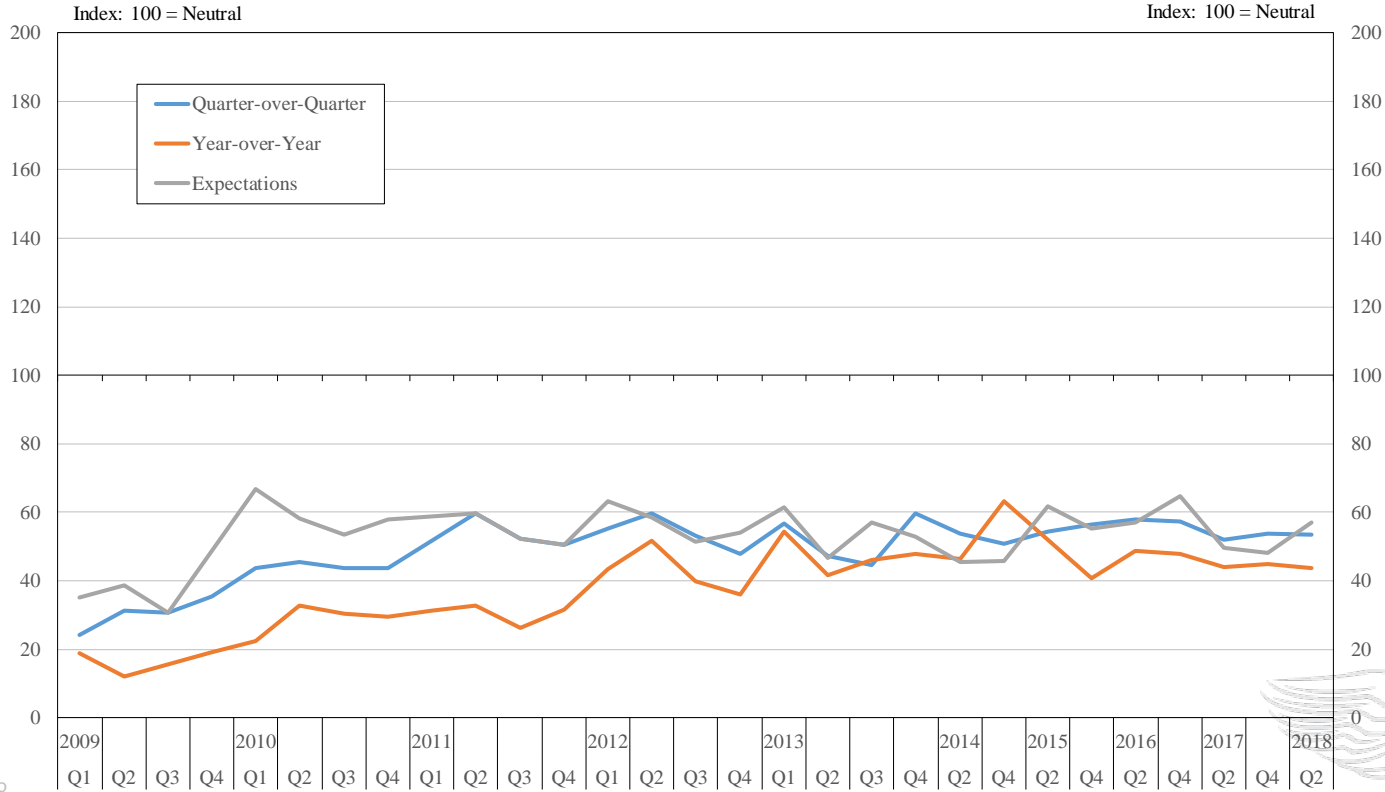
LMI Financial Condition Index

Source: Federal Reserve Bank of Kansas City LMI Survey;
Federal Reserve Bank of Kansas City LMI Economic
Conditions, September 2018

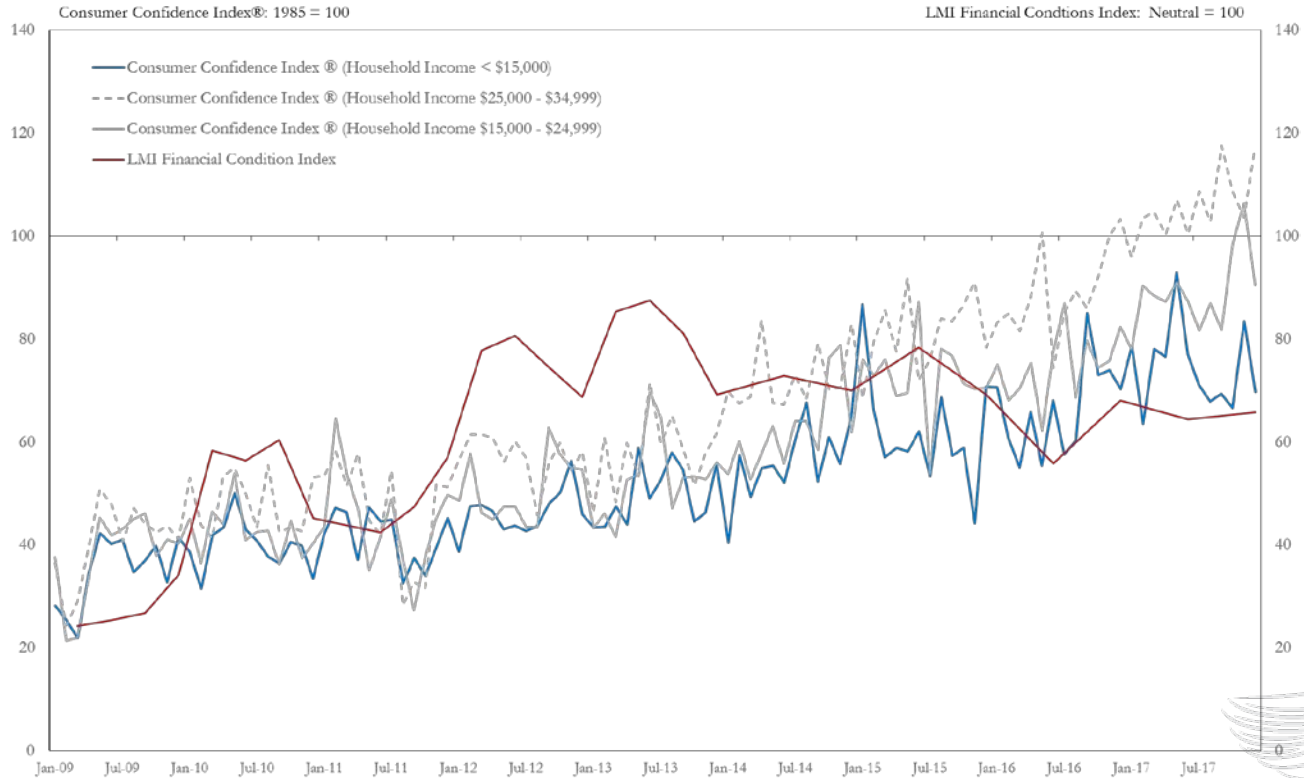


LMI Services Needs Index

Source: Federal Reserve Bank of Kansas City LMI Survey;
Federal Reserve Bank of Kansas City LMI Economic
Conditions, September 2018



LMI Economic Conditions Index and the Consumer Confidence Index



Source: The Conference Board; Federal Reserve Bank of Kansas City, [LMI Economic Conditions, March 2018](#)

10/26/2018

K. Edmiston, FRB KC



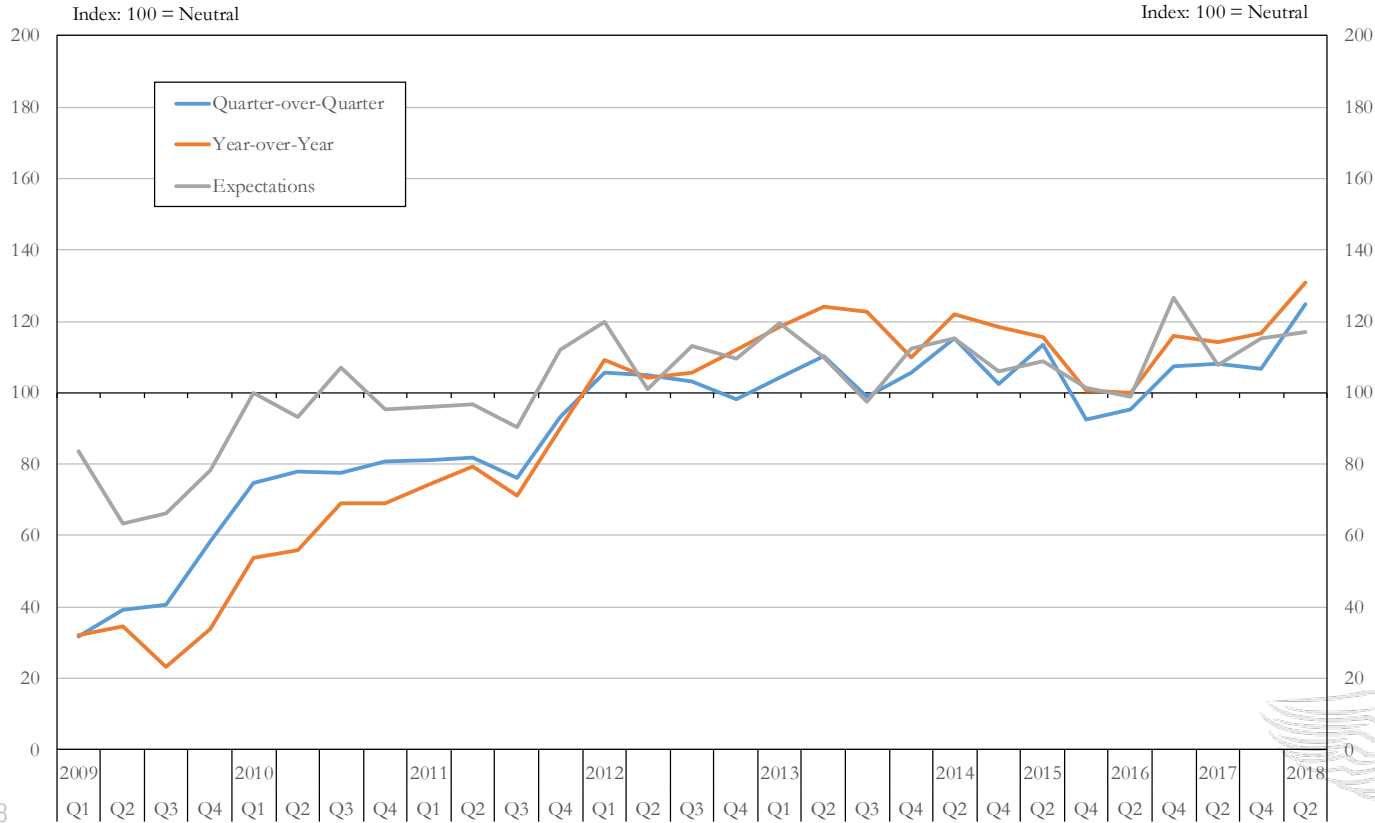
Special Question Responses

- Stagnant wages in tandem with higher prices
- Political uncertainties/policies
- Labor market circumstances
- Affordable housing
- Location-specific issues



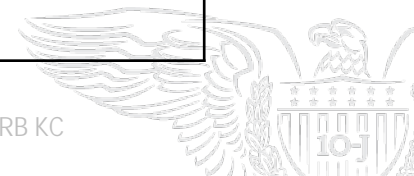
LMI Job Availability Index

Source: Federal Reserve Bank of Kansas City LMI Survey;
 Federal Reserve Bank of Kansas City LMI Economic
 Conditions, September 2018

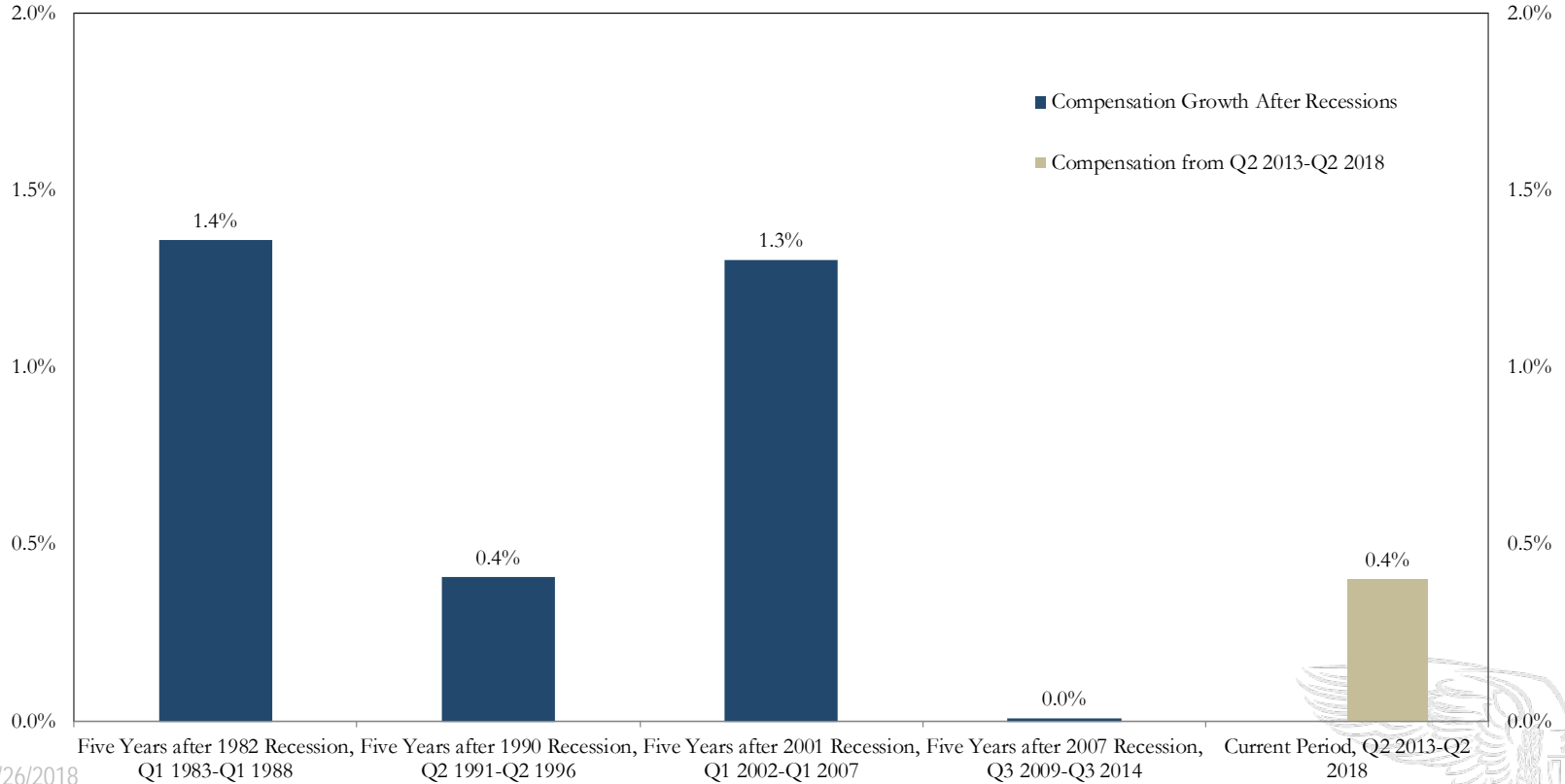


Labor Market Metrics

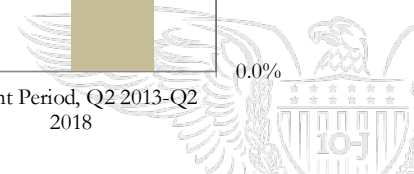
	Official Unemployment Rate (U-3)			Alternative Unemployment Rate		Long-Term Unemployed (Share of all Unemployed)		Labor Force Participation Rate	
	July 2018	June 2018	June 2017	June 2018	June 2017	June 2018	June 2017	June 2018	June 2017
U.S. (All)	3.9	4.0	4.3	7.5	8.3	19.7	21.9	62.9	62.8
District (All)		3.4	3.6					65.4	65.1
LMI		8.5	9.2	15.2	16.5	24.8	29.3	45.5	46.2
Sources: U.S. Bureau of Labor Statistics; Federal Reserve Bank of Kansas City calculations using data from the Current Population Survey; Federal Reserve Bank of Kansas City, LMI Economic Conditions, September 2018									



Annual Inflation-Adjusted Post-Recession Growth in Compensation, including benefits (5 years forward)

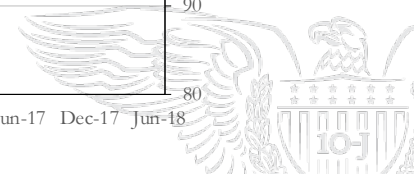
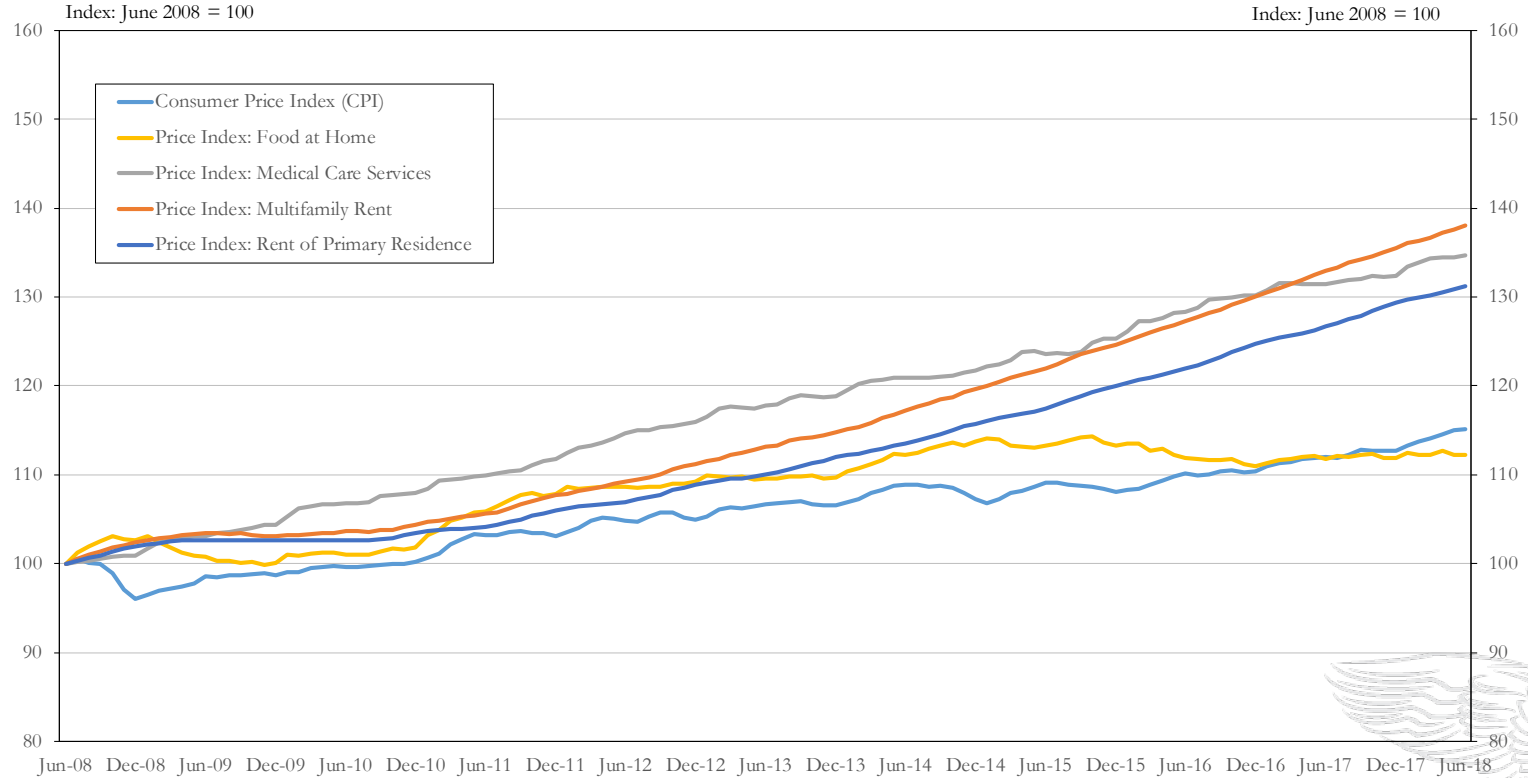


Source: U.S. Bureau of Labor Statistics / HAVER Analytics;
 Federal Reserve Bank of Kansas City, LMI Economic
 Conditions, March 2018 (updated September 2018)



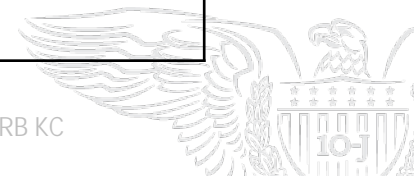
Selected Price Indexes

Source: U.S. Bureau of Labor Statistics /HAVER Analytics;
 Federal Reserve Bank of Kansas City staff calculations;
 Federal Reserve Bank of Kansas City, LMI Economic
 Conditions, September 2018

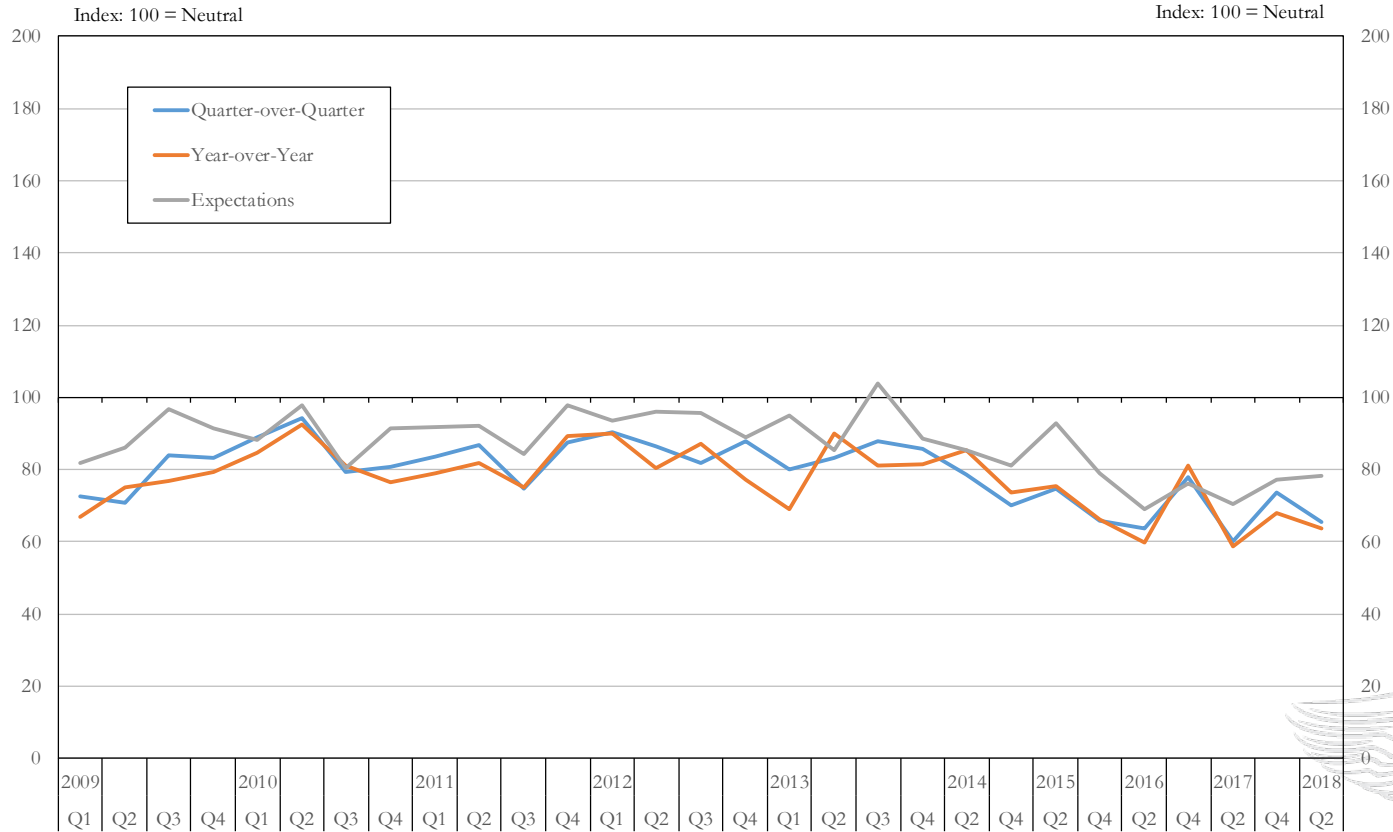


Labor Market Metrics

	Official Unemployment Rate (U-3)			Alternative Unemployment Rate		Long-Term Unemployed (Share of all Unemployed)		Labor Force Participation Rate	
	July 2018	June 2018	June 2017	June 2018	June 2017	June 2018	June 2017	June 2018	June 2017
U.S. (All)	3.9	4.0	4.3	7.5	8.3	19.7	21.9	62.9	62.8
District (All)		3.4	3.6					65.4	65.1
LMI		8.5	9.2	15.2	16.5	24.8	29.3	45.5	46.2
Sources: U.S. Bureau of Labor Statistics; Federal Reserve Bank of Kansas City calculations using data from the Current Population Survey; Federal Reserve Bank of Kansas City, LMI Economic Conditions, September 2018									



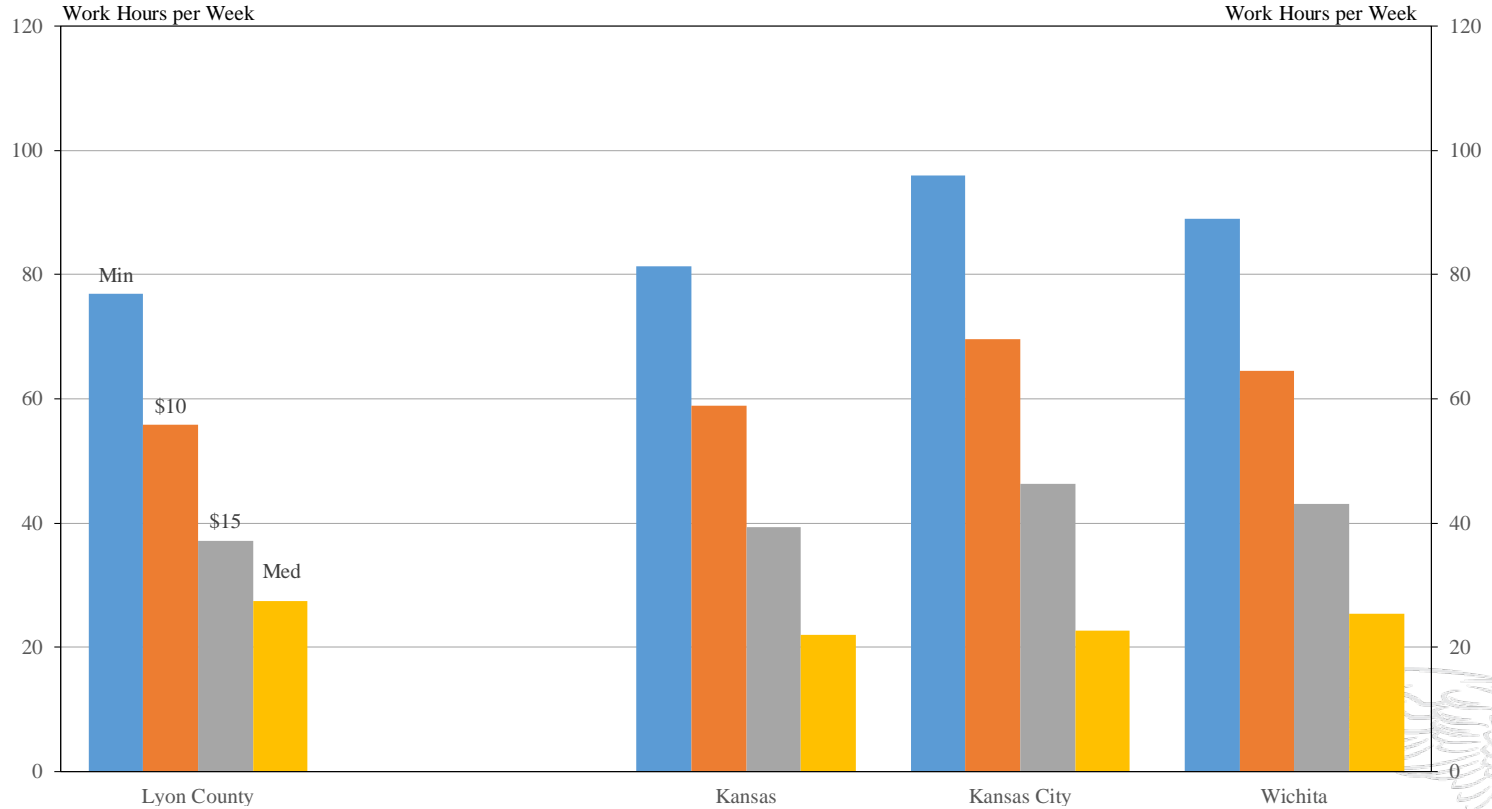
LMI Housing Affordability Index



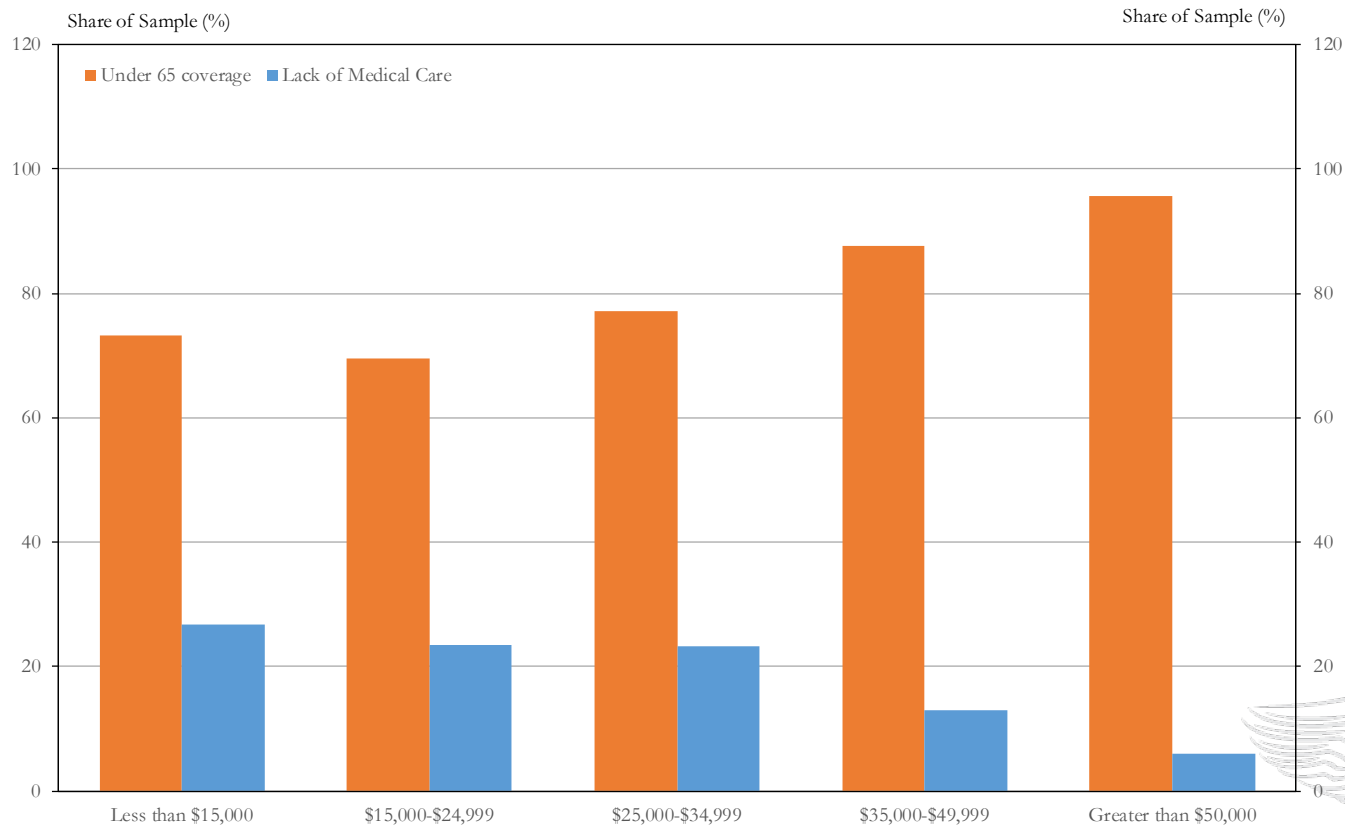
Source: Federal Reserve Bank of Kansas City LMI Survey;
 Federal Reserve Bank of Kansas City, LMI Economic Conditions,
 16 September 2018

Housing Wage

National Low Income Housing Coalition, U. S. Census Bureau; U.S. Department of Housing and Urban Development; KC Fed staff calculations

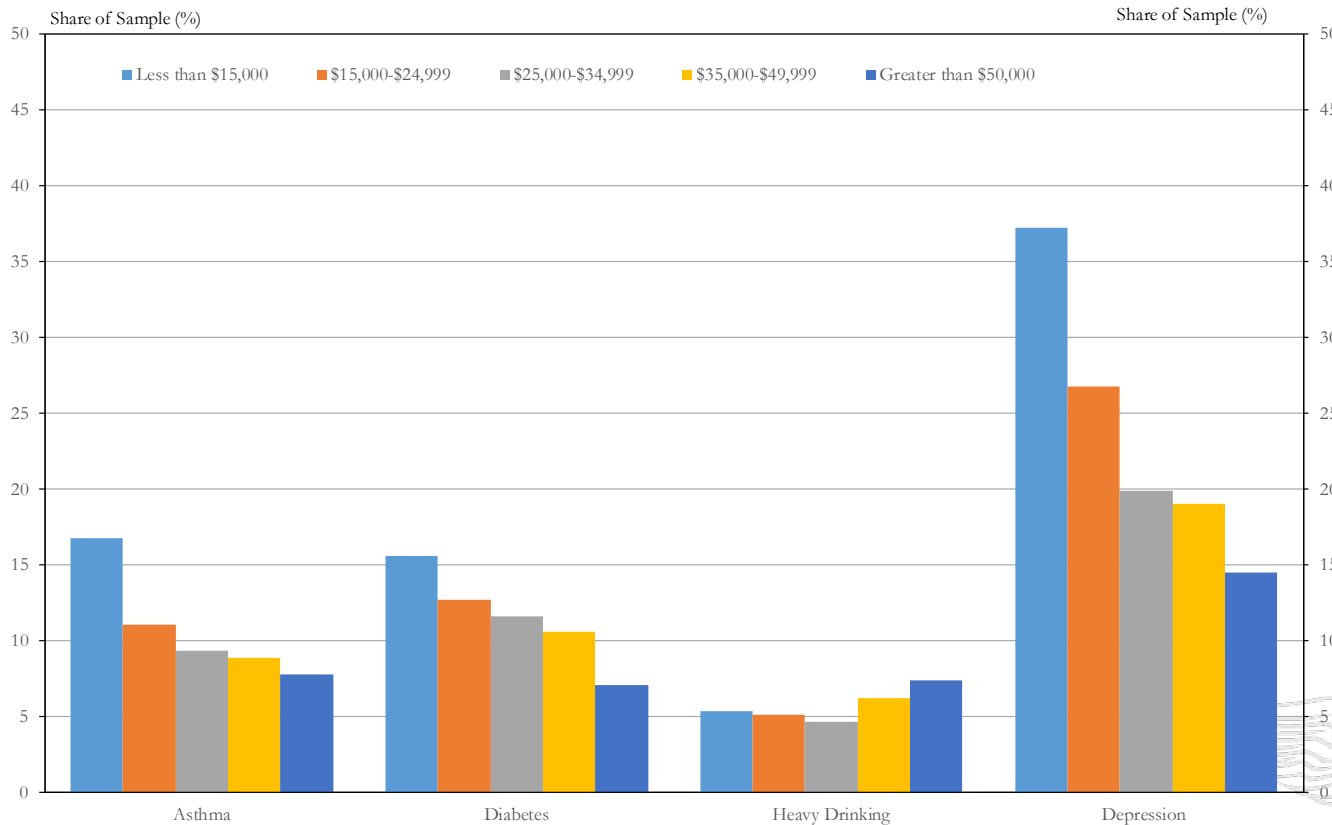


LMI Health Metrics



LMI Health Metrics

Source: Centers for Disease Control and Prevention, Behavioral Risk Factor Surveillance System; Federal Reserve Bank of Kansas City LMI Economic Conditions, September 2018



Contact Information

Kelly D. Edmiston

Senior Economist

Federal Reserve Bank of Kansas City

1 Memorial Drive

Kansas City, MO 64198

kelly.edmiston@kc.frb.org

