



## Economic Bulletin

# When the Music Stops: Slowing Wage Growth May Lead to More Delinquent Debt

by: Jason P. Brown and Colton Tousey

March 24, 2023

Subprime auto debt has risen nearly 10 percent above pre-pandemic levels, and delinquency rates have increased despite high wage growth in the economy. Historically, high wage growth has been associated with lower transitions into delinquency. Should wage growth slow, delinquency rates would likely rise even higher, especially among subprime borrowers.

---

Despite significant disruptions to the economy during the pandemic, household balance sheets remained surprisingly strong. Substantial government transfers and altered spending patterns led to excess savings peaking at \$2.3 trillion in the third quarter of 2021 (Aladangady and others 2022). Although excess savings have since declined, updated estimates show that excess savings remained around \$1.1 trillion through the end of 2022.

These excess savings could allow consumers to repay debt; however, average consumer debt has actually increased. Chart 1 shows that by the end of 2022, real average total consumer debt (blue line) was nearly 5 percent higher compared with pre-pandemic levels. The overall increase occurred due to an increase in the amount borrowed and an increase in the number of new loans in general. In fact, the new loan success rate—the share of new credit accounts opened divided by credit inquiries—increased from 45 percent in January 2020 to 52 percent in December 2022, indicating credit access increased over the past three years.<sup>[1]</sup>

Whether this rise in average consumer debt is concerning depends on both the types of loans being secured and borrowers' relative risk profiles. A natural question is how much the rise in average total debt is being driven by subprime borrowers—those with an Equifax Risk Score below 620—or by debt in a particular category. The green line in Chart 1 shows that real consumer debt declined for subprime borrowers throughout the pandemic, reaching its lowest point in March 2022. Since then, average subprime debt has risen but remained below pre-pandemic levels as of December 2022. However, auto debt for subprime borrowers *has* risen relative to pre-pandemic levels. The dashed green line shows that subprime borrowers' real average auto debt—which makes up 7 percent of all non-housing consumer debt in the United States—has steadily increased since mid-2020 and is now about 10 percent higher compared with pre-pandemic levels. In contrast to subprime borrowers, real average auto debt across all borrowers has remained flat over the same period (blue dashed line).

Although the fiscal transfers in the early stages of the pandemic helped subprime borrowers deleverage and reduce delinquency, subprime delinquency rates began rising even before federal payments ended. Chart 2 shows the share of auto debt newly transitioning into delinquency (with loan payments more than 30 days overdue) for all borrowers and subprime borrowers. While subprime transition rates (green line) initially followed a similar downward trend as all borrowers (blue line), transition rates for subprime borrowers began rising again in March 2021, about nine months earlier than for all borrowers. As of December 2022, transition rates into delinquency for subprime auto debt were about 10 percent higher compared with pre-pandemic levels.

Although delinquency rates have risen, they would likely be even higher without strong wage and salary growth. As of 2022:Q3, real wages and salaries grew 2.8 percent year-over-year. Chart 3 shows that wage and salary growth have historically had a strong negative relationship with auto delinquency—that is, as wage and salary growth decrease, delinquency transition rates tend to rise. The current tight labor market is supporting strong wage growth, likely making debt repayment capacity higher than normal. However, if the labor market were to cool quickly, including large layoffs and a decline in wage growth, the increase in auto debt over the past two years could lead delinquency rates to rise rapidly.

The increase in delinquency for subprime auto debt has been relatively modest, but debt risks may lie in other areas. Indeed, mortgage and other loan forbearances passed in pandemic stimulus bills may have clouded where these risks truly lie, including by delaying their visibility in consumer credit report data. From March 2020 to May 2021, more than 70 million consumers with loans worth \$2.3 trillion entered forbearance, missing \$86 billion in payments (Cherry and others 2021). During that period, 6.3 million mortgages, 11 million auto loans, 68 million student loans, and 62 million revolving loans (such as credit cards) were in forbearance. Borrowers in forbearance in January 2022 were reported to have less financial capacity, on average, than borrowers in forbearance in March 2021 (Li and Ricks 2022). Less financial capacity is consistent with rising transitions to delinquency, especially for subprime borrowers of auto debt who were likely credit constrained to some extent prior to the pandemic.

Because some borrowers may still be eligible for forbearance through mid-2023, it may take more time for risks in the consumer debt market to fully emerge.<sup>[2]</sup> Subprime borrowers are likely to experience the economic stress of job loss and difficulty making debt payments ahead of other borrowers, thus serving as a leading indicator of what happens in the consumer debt market when the music of excess savings, forbearance, and high wage growth stops.

## Endnotes

<sup>[1]</sup> We measure credit access by the new loan success rate—specifically, the share of new accounts opened within the last 12 months divided by the number of inquiries within the last 12 months in the New York Fed Consumer Credit Panel.

<sup>[2]</sup> See Consumer Financial Protection Bureau (2021) for details about COVID-related loan forbearance.

---

## Authors



### Jason P. Brown

#### Vice President and Economist

Jason Brown is a Vice President and Economist in the Economic Research Department of the Federal Reserve Bank of Kansas City. In this role, he coordinates the regional and commodities research of the Bank and serves as liaison to regional and commodities researchers located in branch offices and in Kansas City. He conducts research on issues related to regional economic growth, emerging industries, natural resource development, and structural change in regional industry and labor markets. Prior to joining the Federal Reserve Bank of Kansas City, Jason was an economist at the USDA Economic Research Service in Washington, D.C. He holds a Ph.D. from Purdue University.

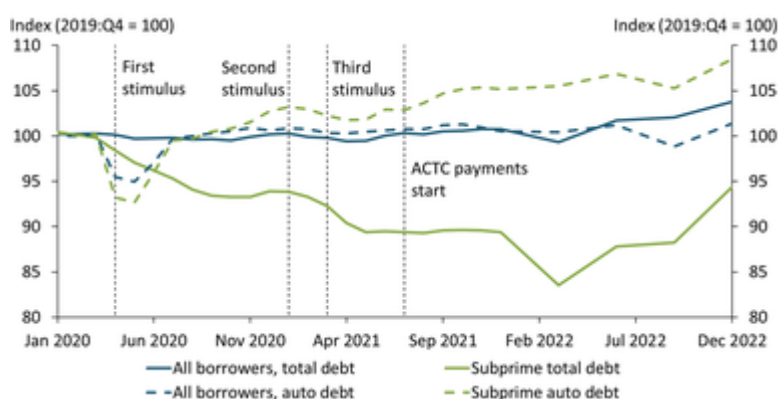


### Colton Tousey

#### Senior Supervisor

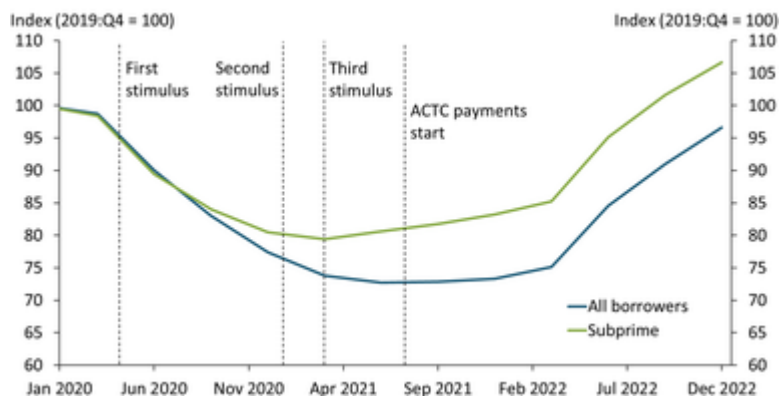
I joined the Federal Reserve Bank of Kansas City after receiving my BS degree in mathematics from the University of Kansas. Since joining the Kansas City Fed, I have had the honor to work with [Jason Brown](#) and [Francisco Scott](#) in their research. Currently, I am working on projects looking at the changes in trends in migration among urban areas in the United States as well as projects on transitions occurring in the energy sector. Recently, I have moved into a formal leadership role within the department, supervising new RAs and working on the development of RAs.

## Media



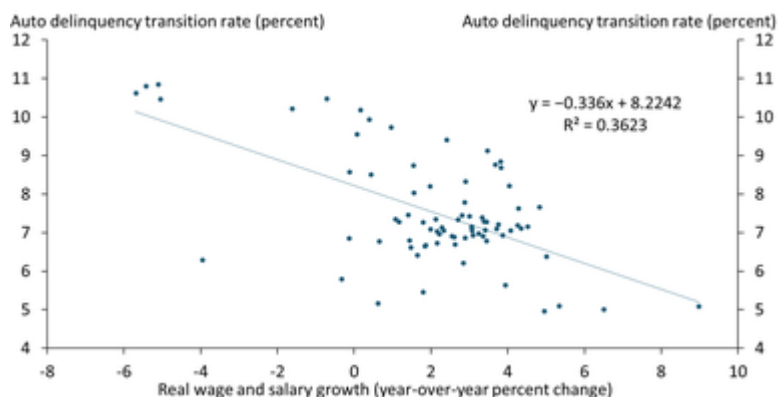
**Chart 1: Real average total consumer debt increased in 2022**

Notes: Subprime data are average tabulations of debt from consumers with an Equifax Risk Score below 620. ACTC payments are the Advance Child Tax Credit made available under the American Rescue Plan. Source: Federal Reserve Bank of New York Consumer Credit Panel/Equifax.



**Chart 2: Subprime transition rate into auto delinquency (30+ days) is above pre-pandemic levels**

Note: Delinquency transition rates are the share of debt newly transitioning into delinquency (30+ days). Source: Federal Reserve Bank of New York Consumer Credit Panel/Equifax.



**Chart 3: Higher wage growth is typically associated with lower delinquency transition rates**

Note: The chart shows the relationship between real wage and salary growth and auto delinquency transition rates over the period 2003:Q1 to 2022:Q3. Sources: Federal Reserve Bank of New York Consumer Credit Panel/Equifax and the U.S. Bureau of Economic Analysis (Haver Analytics).